

How do I set up my telephone (VOIP handset) to work with the Fibrus router?

When your router was installed, you should have also received a VoIP adaptor (illustrated below) If you don't have an adaptor, please contact our customer service team on 02890 993230 and they will be happy to arrange for one to be sent out.

VoIP Adaptor



Step 1: Connect the VoIP adapter to the Nokia 2425 router.

- Plug the small end of the adaptor into the Tel 1 port on the back of the router.
- The Tel1 port is always coloured grey.

An example of the adaptor plugged into the Tel1 port is illustrated in the picture below.

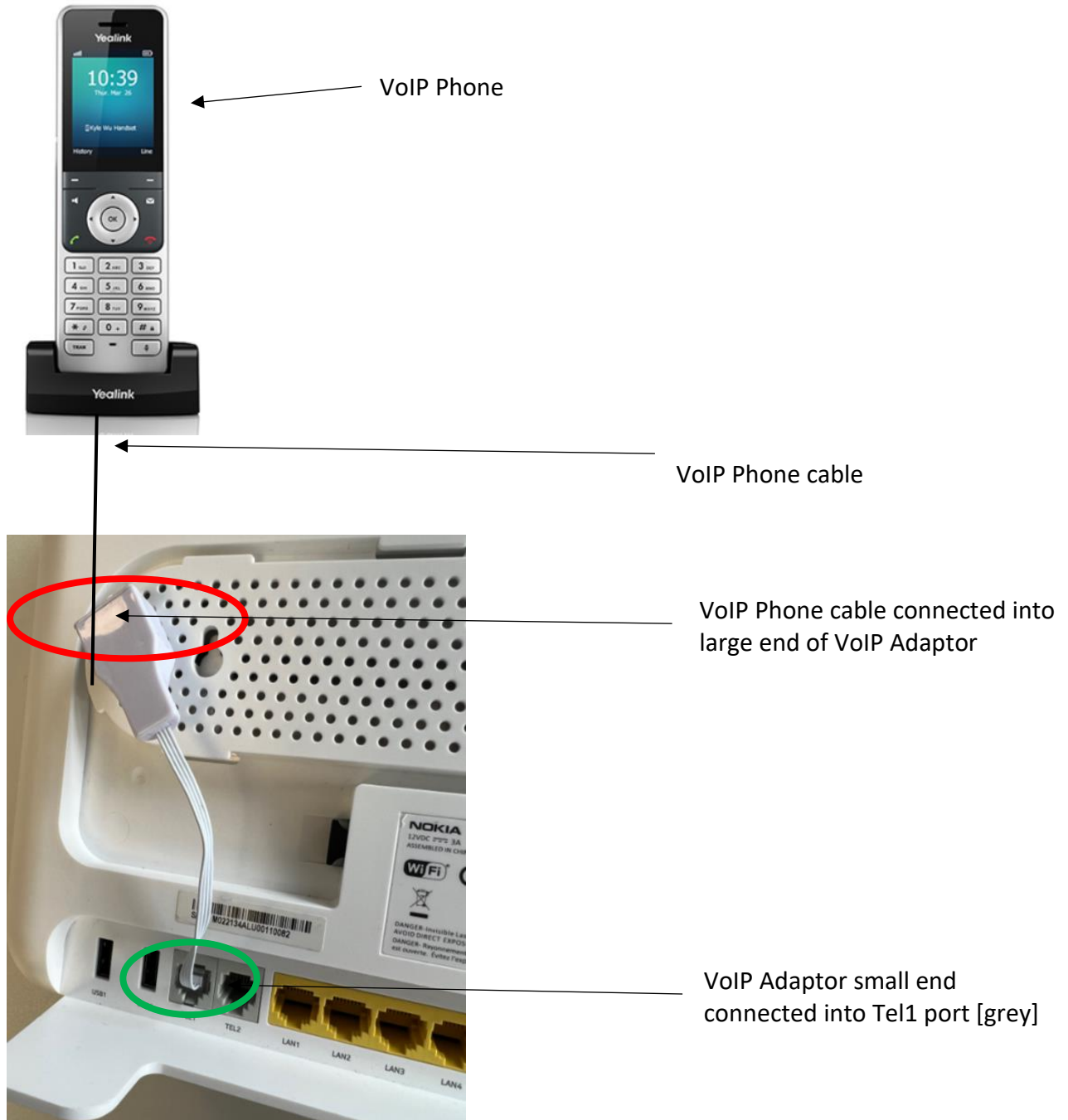
VoIP Adaptor plugged into Tel1 port on Nokia router



Step 2: Connect the telephone to the +VoIP adaptor.

- Plug your telephone lead into the large end of the adaptor, as pictured below.

VoIP Phone plugged into large end of VoIP adaptor



Step 3: Check your router and phone are plugged in and switched on.